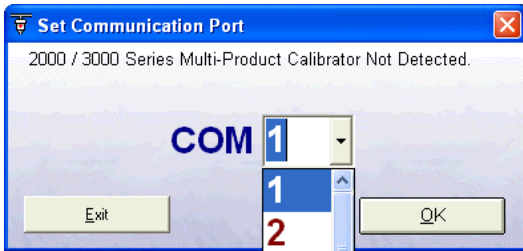


Selecting a COM Port



On starting the virtual front panel for the first time, a COM port selection screen will be displayed. Click on the COM port that is connected to your 3000 Series calibrator to continue.



If you are using a laptop to connect to the calibrator, the COM port will usually be COM 1. A desktop computer will usually be COM 2

Operation of the Virtual Front Panel

Once the correct COM port is selected, the calibrator will be detected, and the main screen displayed :



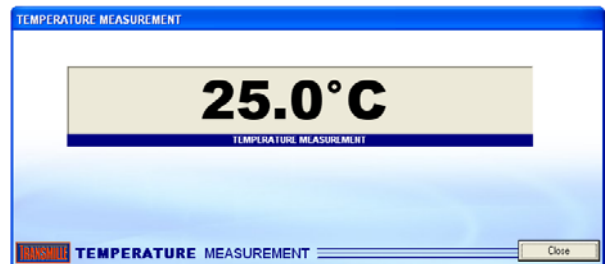
The main functions of the adapter are :

- Temperature Measurement
- Humidity Measurement

Functions : Ambient Temperature Measurement

Select the temperature measurement mode by pressing the temperature measurement function button

TEMPERATURE MEASUREMENT



Temperature Measurement Indicator

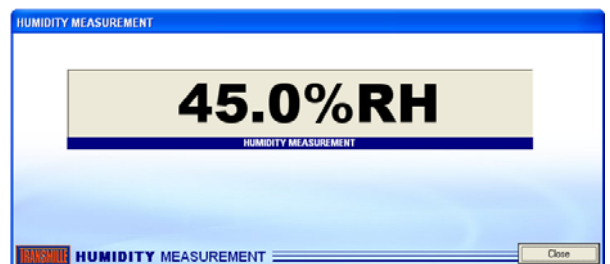


The temperature will be displayed on screen (continuously updated).

Functions : Relative Humidity Measurement

Select the humidity measurement mode by pressing the humidity measurement function button

HUMIDITY MEASUREMENT



Humidity Measurement Indicator



The humidity will be displayed on screen (continuously updated)